



TESON-COAT

1-P POLYMER-MODIFIED WATERPROOFING MEMBRANE (TW-112)

Description : It is one component, ready to use, non toxic, water based polymerized product, design to perform a elastomeric liquid applied waterproofing membrane. It can apply by brush roller or spray and capable to form seamless membrane with excellent water resistance and minimum wastage. The average coverage will be 1-2 kg/m², requires minimum 2 to 3 coats subject to application .

Applications :

- RC roof
- Roof garden, terrace
- Toilet, Kitchen
- Balcony, Planter Box
- Retaining Wall
- Swimming Pool

Advantages :

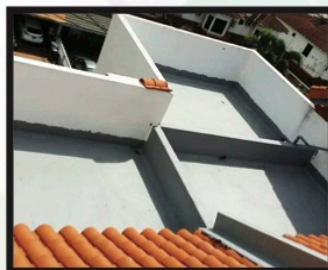
- Flexible / Elogate
- Water based
- Non toxic
- Low odour
- Easy application
- Non hazardous
- Seamless



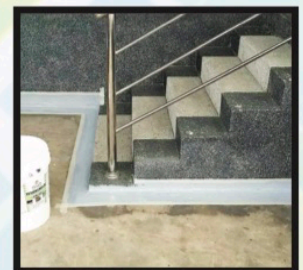
Application Reference



Direct Apply



Roof Top Application



Wall Corner

Product Range

PRODUCT CODE	PACKING SIZE	PACKING FORM	COLOUR
TW-112/WH/20K	20Kg	Pail	White
TW-112/WH/5K	5Kg	Pail	White
TW-112/WH/1.4K	1.4Kg	Can	White
TW-112/GR/20K	20Kg	Pail	Grey
TW-112/GR/5K	5Kg	Pail	Grey
TW-112/GR/1.4K	1.4Kg	Can	Grey



TESON-COAT

1-P POLYMER-MODIFIED WATERPROOFING MEMBRANE (TW-112)

It is one component, ready to use, non toxic, water based polymerized product, design to perform a elastomeric liquid applied waterproofing membrane. It can apply by brush roller or spray and capable to form seamless membrane with excellent water resistance and minimum wastage. The average coverage will be 1-2 kg/m², requires minimum 2 to 3 coats subject to application .

ADVANTAGES:

- Environmental friendly.
- Non-toxic & non-flammable (Solvent Free).
- Faster setting and curing time.
- Good adhesion to many substrates.

APPLICATION:

- RC roof
- Roof garden, terrace
- Toilet, Kitchen
- Balcony, Planter Box
- Retaining Wall
- Swimming Pool

SURFACE PREPARATION:

- Substrate surface shall be clean, free of dust, oil, grease, laitance or any other deleterious substrates.
- Concrete slab shall be trowelled smooth to receive
- TЕСON-COAT waterproofing membrane.
- Masonry upturn walls shall be troweled/plastered reasonably smooth to avoid pin-holes.
- Exposed bricks, honeycombing and depressions in existing surfaces shall be made good.
- Angle fillets shall be laid between floor & wall around the perimeter, using cement mixed with TЕСON LATEX.

APPLICATION PROCEDURES

- Straight from container with brush, spray or roller.
- Apply 1st coat TЕСON-COAT over the upturn of 300mm or 1800mm on the entire wall and then the entire floor area with a wet film of 0.5 to 1.0mm thick.
- Embed a layer of woven fabric.
- After surface dries, apply 2nd coat with the same thickness (total thickness: 0.5-1mm). The thickness varies depending on the surface of substrate but it shall not exceed 1 mm, otherwise curing time will take longer;
- Primer is optional, depending on the surface and porosity of the substrate.
- Primer after dilutes TЕСON-COAT will provide estimate coverage of 0.2 kg/m².

STORAGE / PACKAGING

- Do not store TЕСON-COAT directly under sunlight and also where it is likely to freeze.
- Not advisable to store for more than 1 year.

Product Range

PRODUCT CODE	PACKING SIZE	PACKING FORM	COLOUR
TW-112/WH/20K	20Kg	Pail	White
TW-112/WH/5K	5Kg	Pail	White
TW-112/WH/1.4K	1.4Kg	Can	White
TW-112/GR/20K	20Kg	Pail	Grey
TW-112/GR/5K	5Kg	Pail	Grey
TW-112/GR/1.4K	1.4Kg	Can	Grey

CURING AND SETTING TIME:

- After application of 1st coat TЕСON-COAT, the drying time is approx. one hour but allow to self-cure for another 2 to 3 hours before applying the 2nd coat.
- The drying time largely depends on the surface of substrates and relative humidity of the surrounding areas which sometimes require the membrane to cure longer.

WATER PONDING

Water ponding shall be carried out 72 hours later after application of the membrane. Water ponding shall be conducted for not more than 48 hours.

COVERAGE:

Approx 20m² per 20kg pail depending on the porosity and surface of the substrate.

PROPERTIES:

Tensile Strength	: 1.5N/mm ²
Elongation	: 150-200%
Density	: 1.3 to 1.4
Water Absorption	: Good & Non Drip

NOTE:

Care shall be taken during screeding to avoid puncturing the waterproofing membrane, otherwise lay a protective screed. If any puncturing occurs, to inform the applicator concerned to carry out the necessary repairs.

COLOUR:

White & grey colors available. Other colors shall be made subject to minimum order quantity.

PRECAUTION:

Health & Safety

TЕСON-COAT is safe to use as it is non-flammable and non-toxic. However, It is still advisable to follow good working practice and use only in well ventilated areas.

Keep out of reach of children.

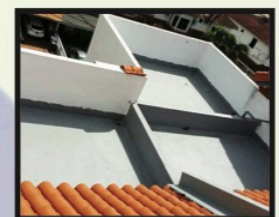
LIMITED WARRANTY:

Sellers and manufacturers only obligation shall be replacement of such quantity of product proved to be defective. All advice given herewith is to the best of knowledge, true and accurate. All recommendations or suggestions are made without guarantee. Since the conditions of use are beyond our control, the seller or manufacturer shall not be liable for any injuries, loss or damage, direct or consequential arising from the use of or the failure of the product. Before using, user shall determine the suitability of the product for his intended use and user assumes all risk and liability.

APPLICATION REFERENCE:



Direct Apply



Roof Top Application